



FREEWAT
Free and Open Source Software Tools for Water Resources Management
 EU HORIZON 2020 Project



 Horizon 2020
 European Union Funding
 for Research & Innovation



TARTU ÜLIKOOL
 geoloogia osakond
1632

FREEWAT- Selisoo testala



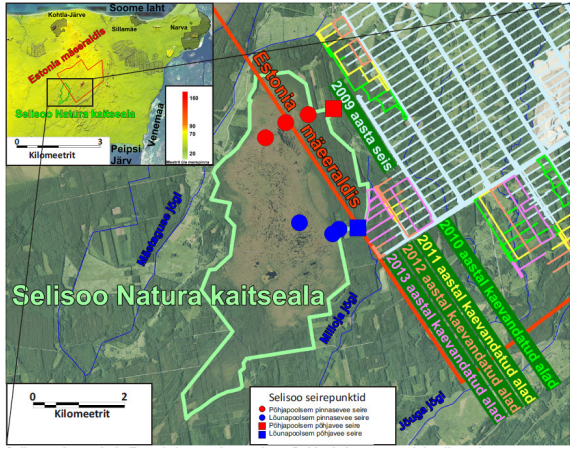
Tallinn, 19.08.2016


FREEWAT



 Horizon 2020
 European Union Funding
 for Research & Innovation

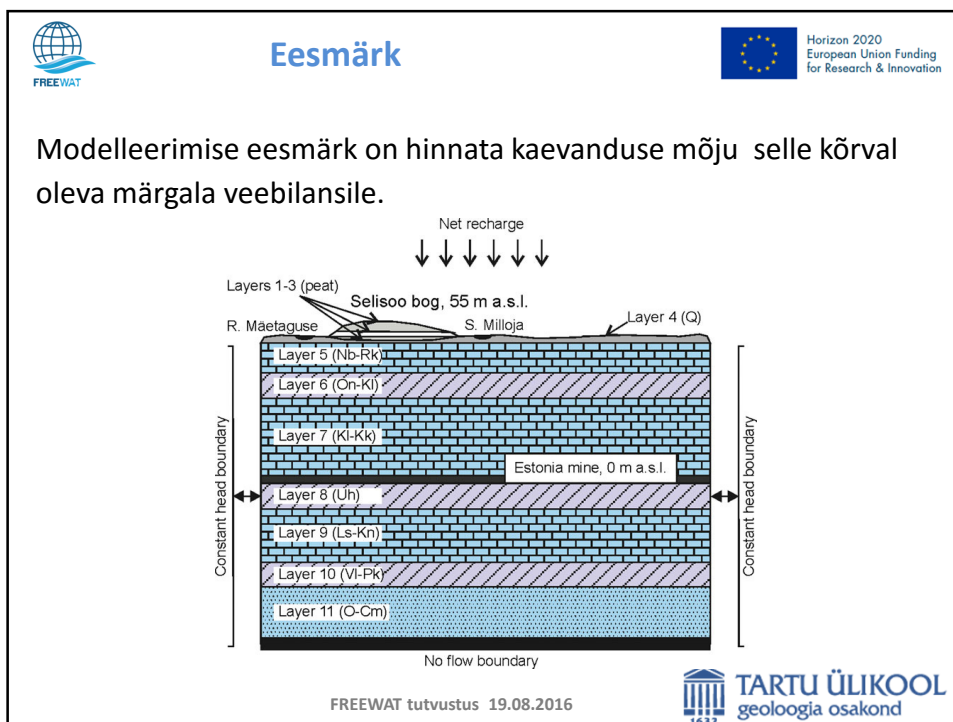
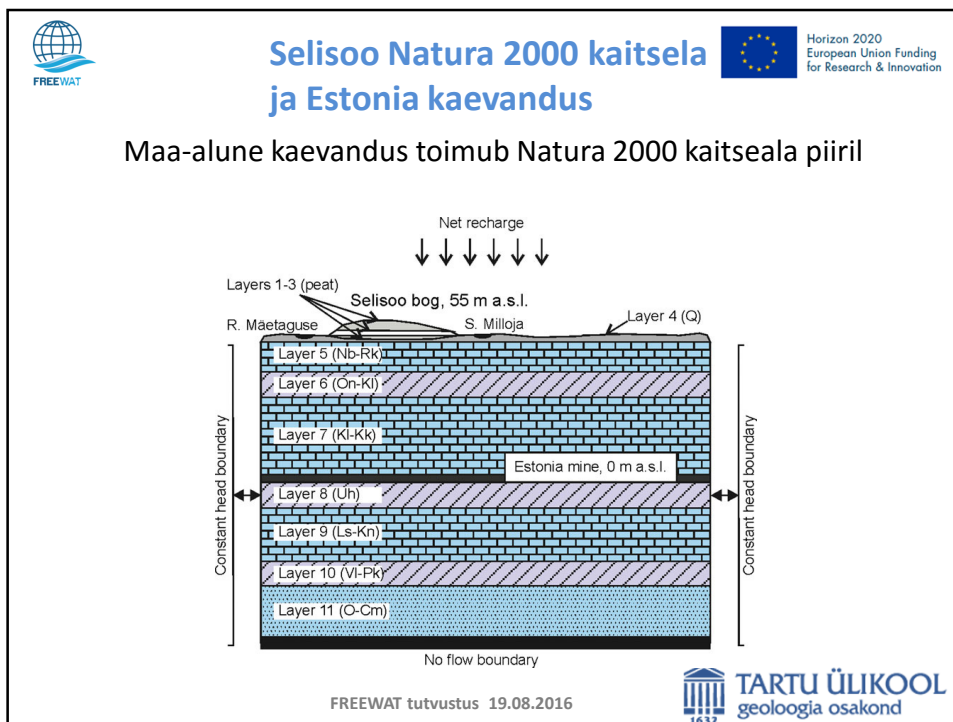
Selisoo Natura 2000 kaitseala ja Estonia kaevandus


Maa-alune kaevandus toimub Natura 2000 kaitseala piiril




FREEWAT tutvustus 19.08.2016


TARTU ÜLIKOOL
 geoloogia osakond
1632






Olemasolev andmestik




Horizon 2020
European Union Funding
for Research & Innovation

- muutused pinnakatte taimestik ja maakasutuses;
- pinnase tüübid;
- geoloogiliste kihtide geomeetria;
- pinnaste veelised omadused;
- põhjaveetasemete seire andmestik;
- põhjavee kasutus;


FREEWAT tutvustus 19.08.2016



TARTU ÜLIKOOL
geoloogia osakond



Olemasolev andmestik



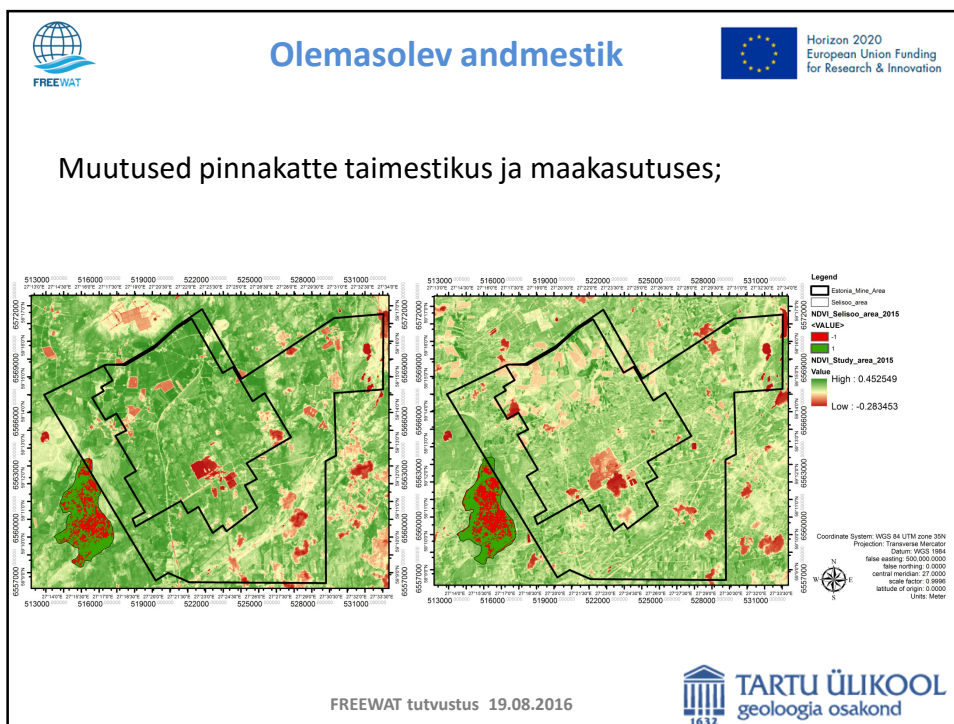
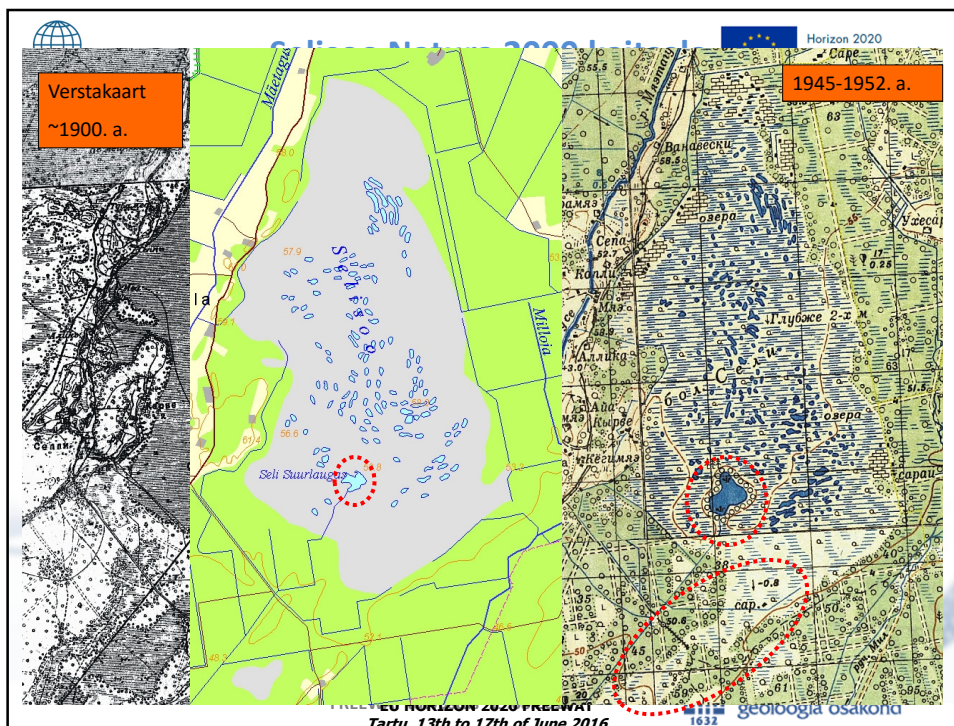
Horizon 2020
European Union Funding
for Research & Innovation

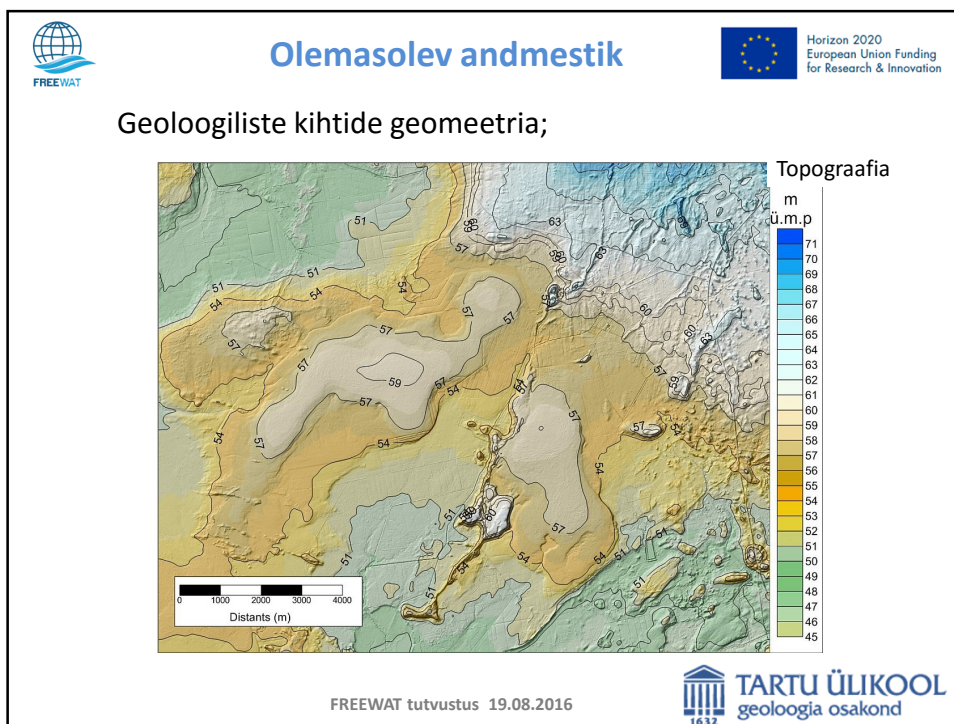
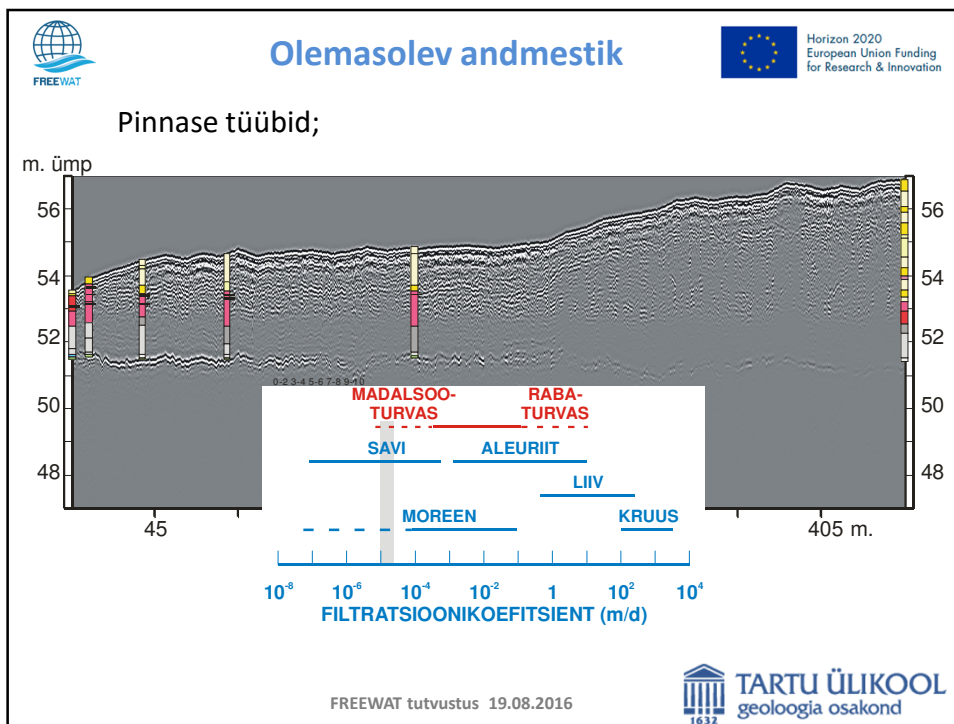
Muutused pinnakatte taimestik ja maakasutuses;

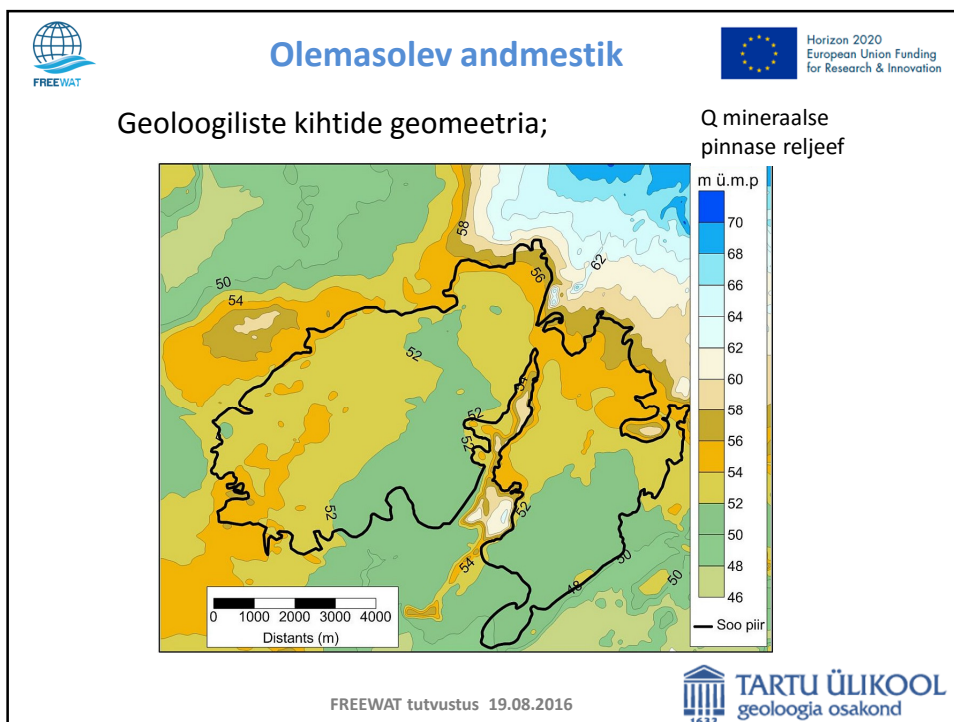
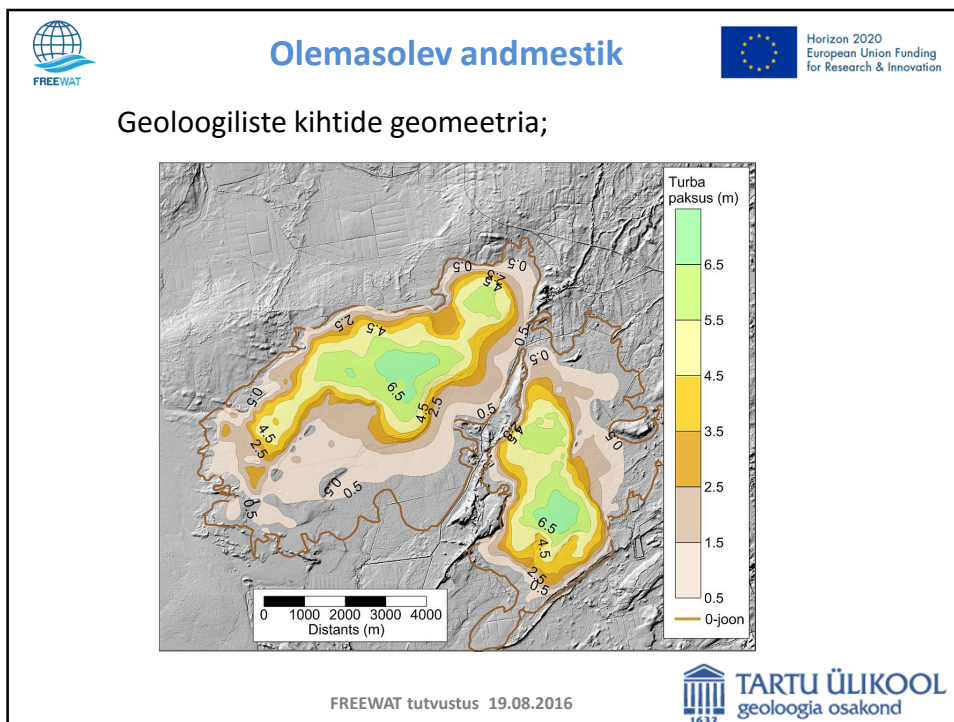
FREEWAT tutvustus 19.08.2016

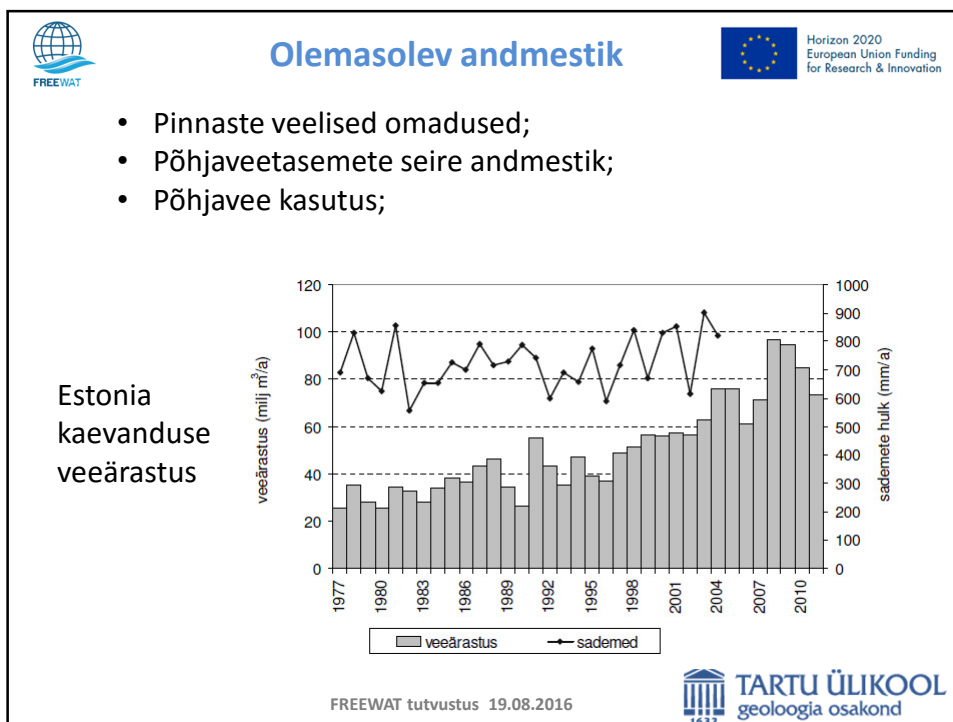
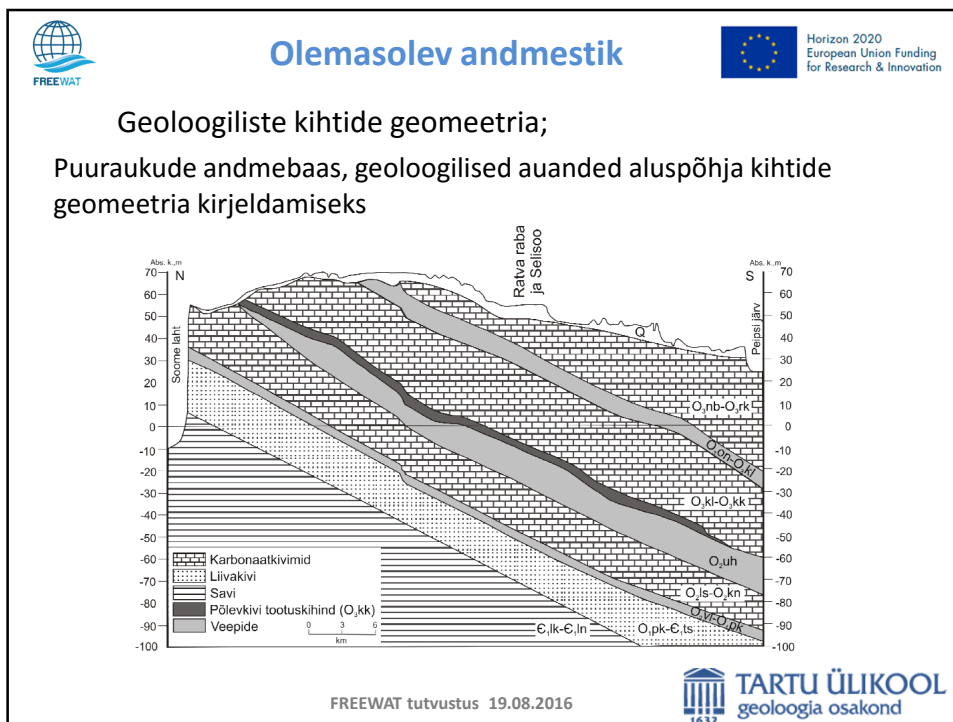


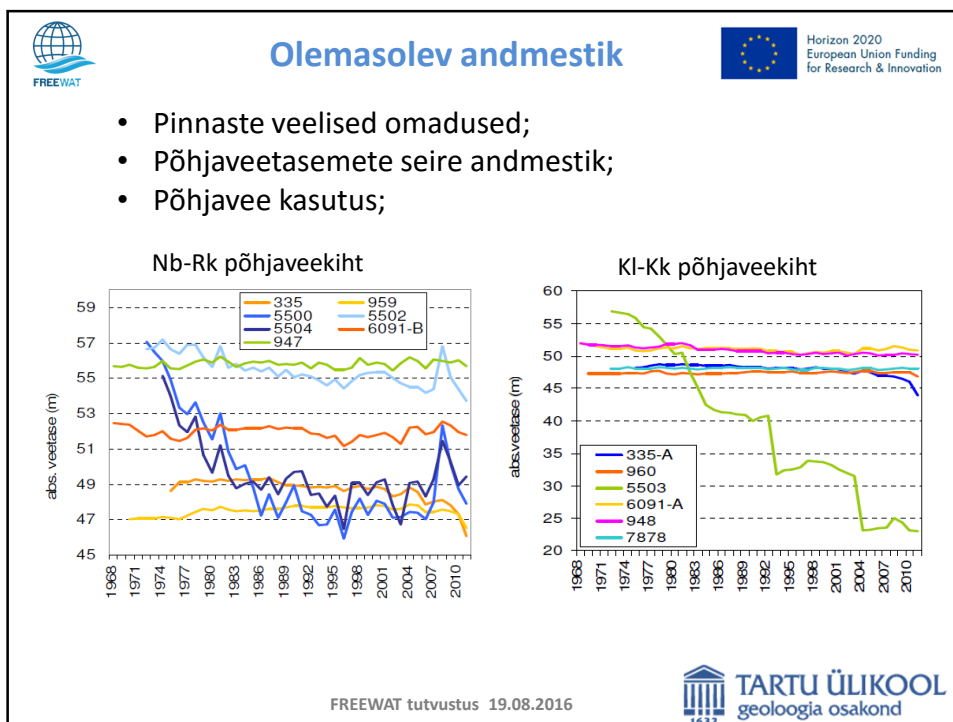
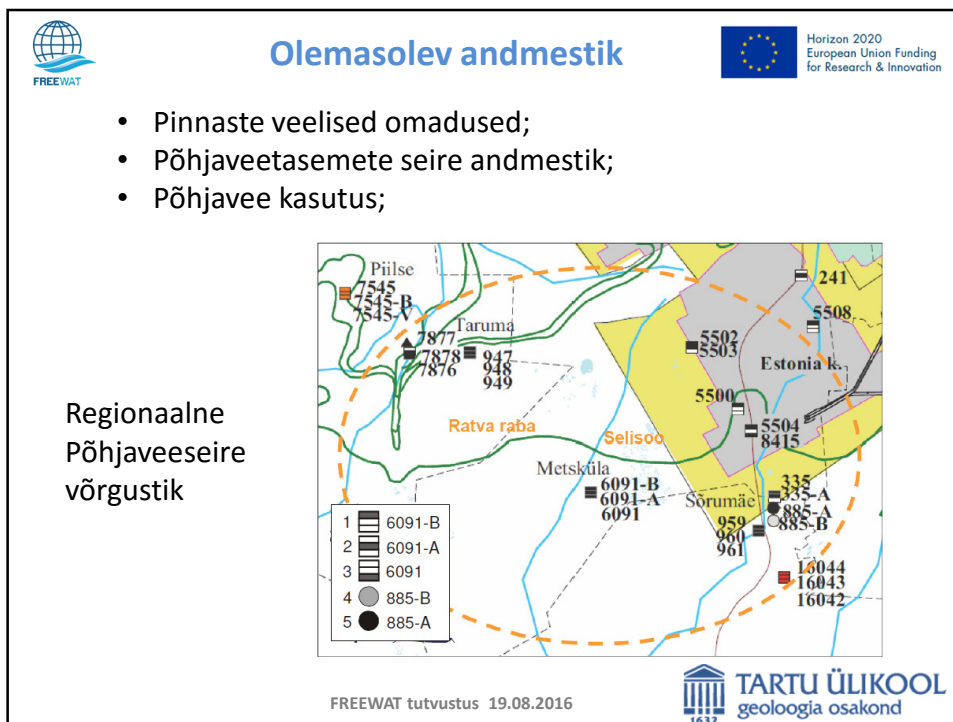
TARTU ÜLIKOOL
geoloogia osakond

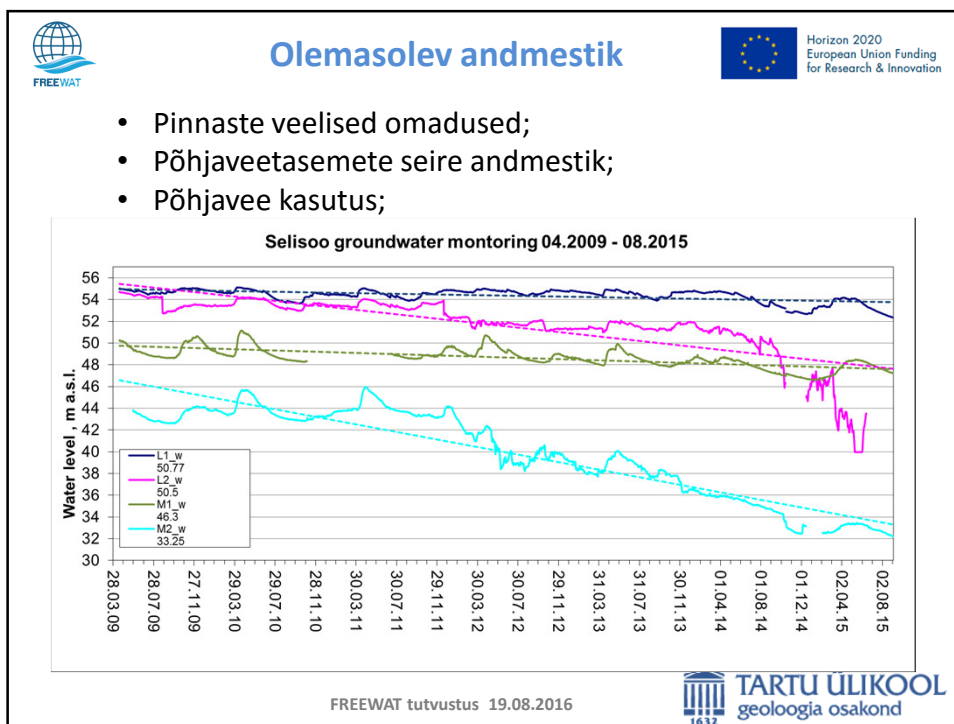
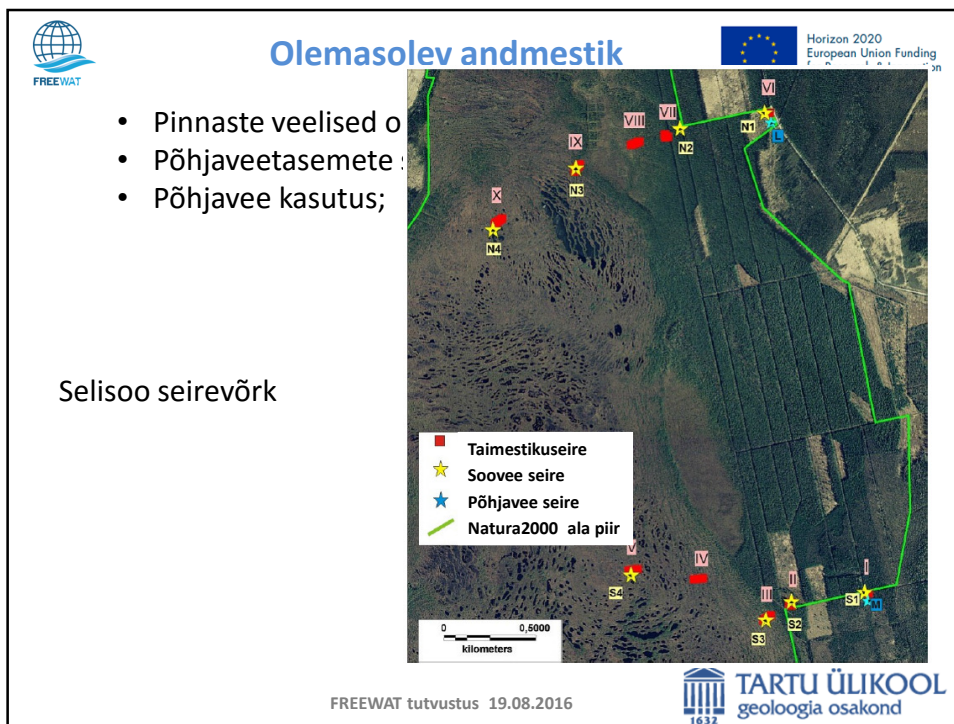


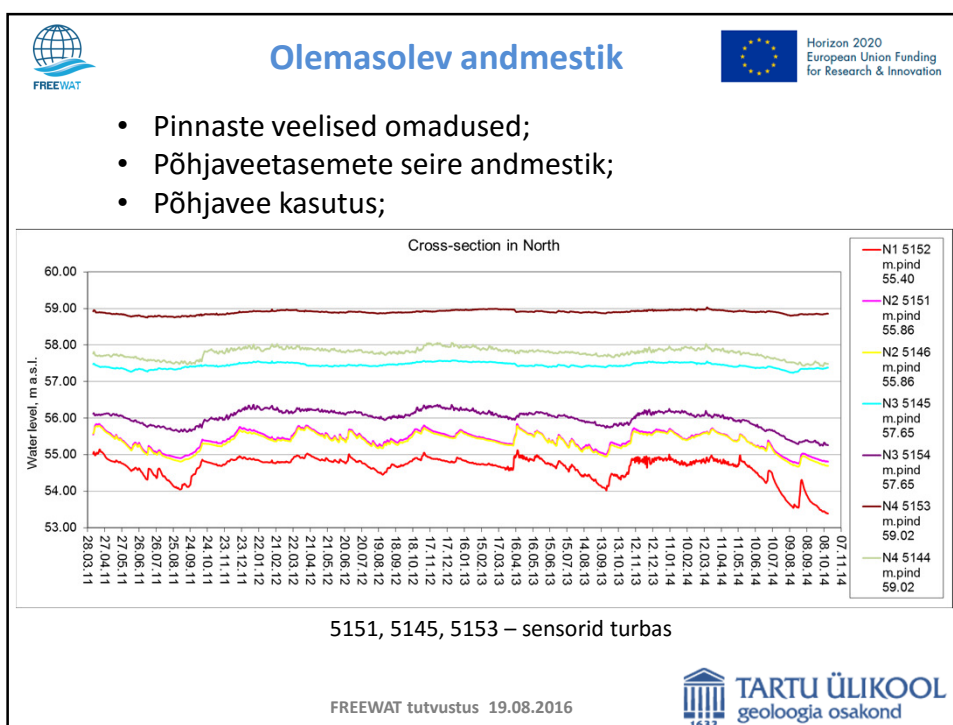
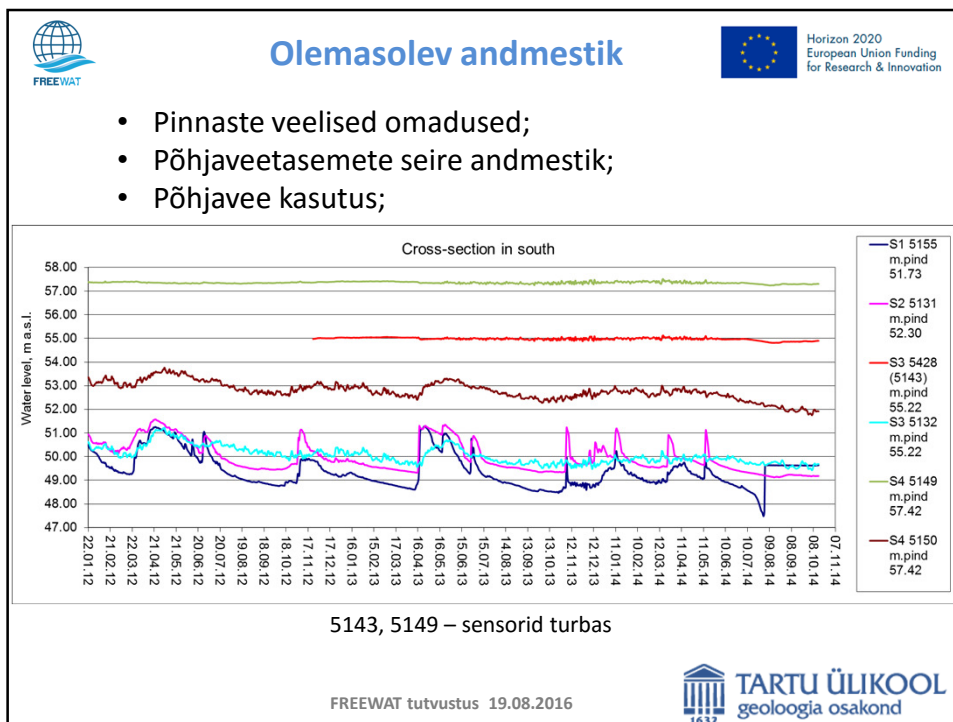







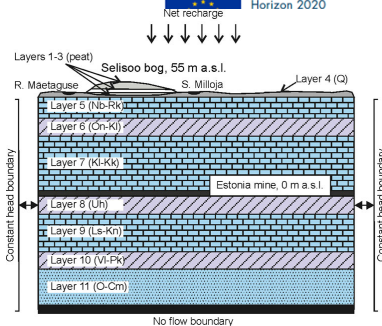






 **Olemasolev põhjaveemudel**

Horizon 2020
Net recharge






Layers 1-3 (peat)
Selisoo bog, 55 m a.s.l.
Layer 4 (C)
Layer 5 (Nb-Rk)
Layer 6 (Cn-Kk)
Layer 7 (Kl-Kk)
Estonia mine, 0 m a.s.l.
Layer 8 (Uj)
Layer 9 (Ls-Kn)
Layer 10 (Vl-Pk)
Layer 11 (O-Cm)
Constant head boundary
Constant head boundary
No flow boundary

Hang, T., Hiiemaa, H., Järveoja, M., Jõelett, A., Kalm, V., Karro, E., Kohv, M., Mustasaar, M., Polikarpus, M., Plado, J. **2012. Ratva raba hüdrogeoloogiline uuring ja Selisoo seiresüsteemi rajamine.** KIK projekti nr 15 aruanne. Tartu Ülikooli geoloogia osakond.

Marandi, A., Karro, E., Polikarpus, M., Jõelett, A., Kohv, M., Hang, T., Hiiemaa, H. **2013. Simulation of the hydrogeologic effects of oil-shale mining on the neighbouring wetland water balance: case study in north-eastern Estonia.** Hydrogeology Journal, 21(7), 1581 - 1591.

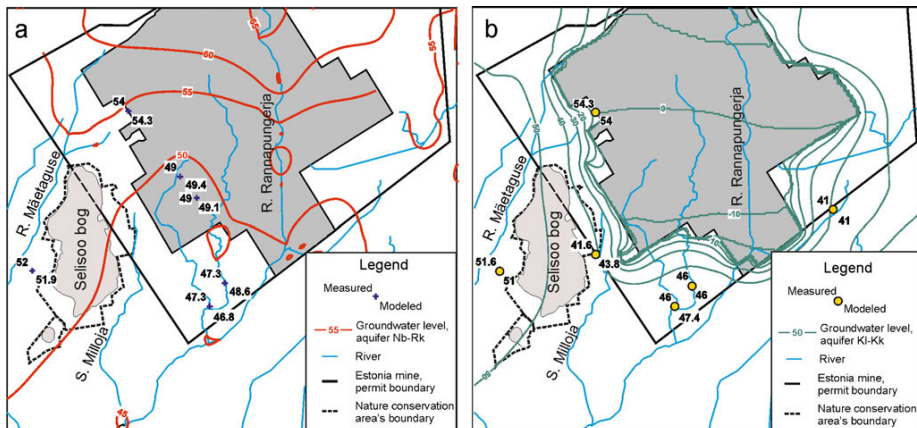
Marandi, A., Veinla, H., Karro, E. **2014 Legal aspects related to the effect of underground mining close to the site entered into the list of potential Natura 2000 network areas.** Environmental Science and Policy, 38, 217 - 224.

FREEWAT tutvustus 19.08.2016 

 **Olemasolev põhjaveemudel** 


Horizon 2020
European Union Funding
for Research & Innovation

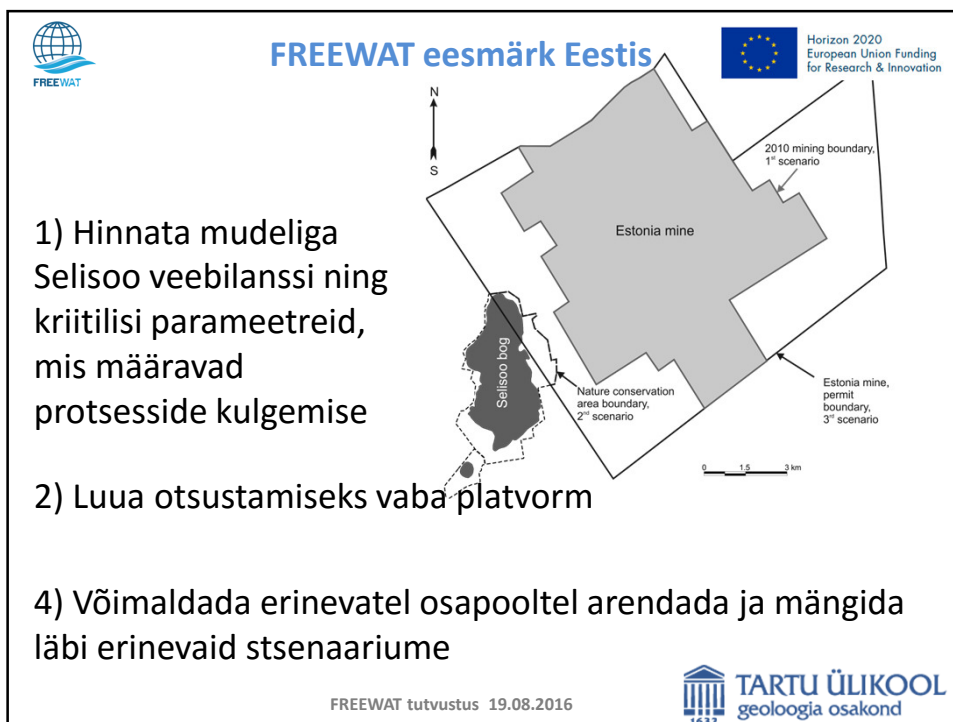
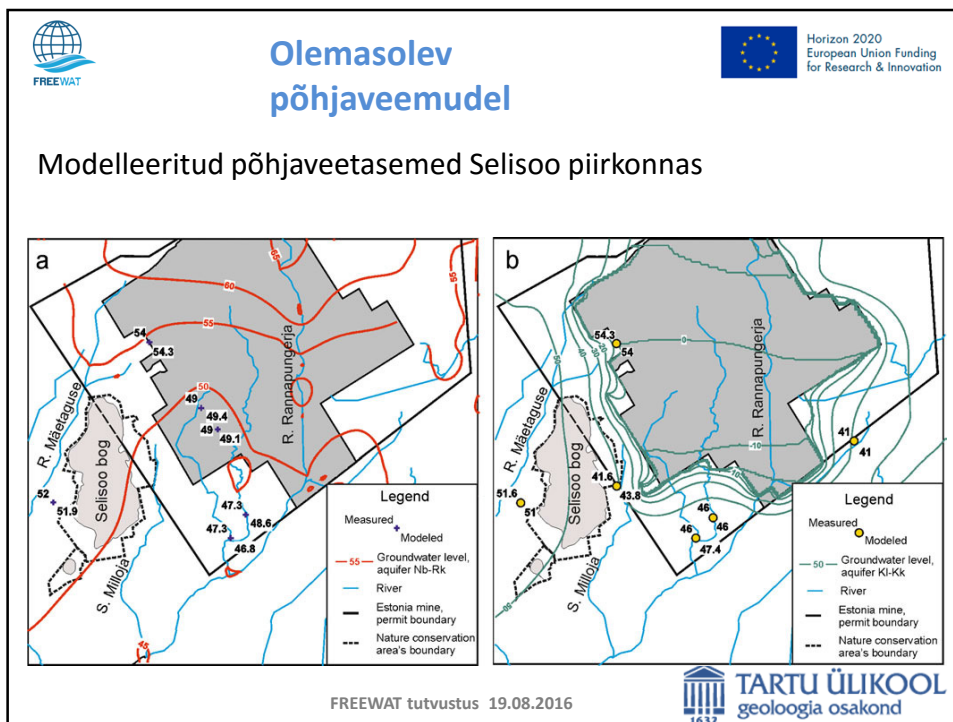
Modelleeritud põhjaveetasemed Selisoo piirkonnas



Legend
Measured
Modeled
— 55 — Groundwater level, aquifer Nb-Rk
— River
— Estonia mine, permit boundary
--- Nature conservation area's boundary

Legend
Measured
Modeled
— 50 — Groundwater level, aquifer Kl-Kk
— River
— Estonia mine, permit boundary
--- Nature conservation area's boundary

FREEWAT tutvustus 19.08.2016 





Täna kuulamast!

Kontakt:

Andres Marandi
Argo Jõelet
Maile Polikarpus
Marko Kohv

andres.mrandi@ut.ee
argo.ioelet@ut.ee
maile.polikarpus@ut.ee
marko.kohv@ut.ee

FREEWAT tutvustus 19.08.2016

